

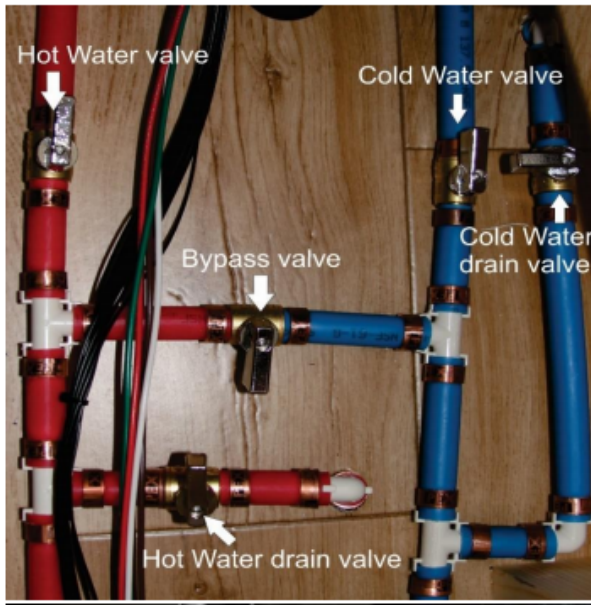


## TAB 320 S and U – Winterization

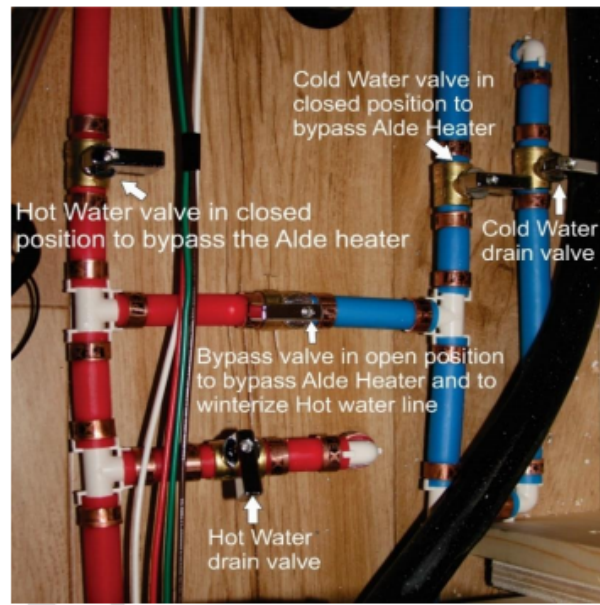
1. First, drain all the tanks – the freshwater tank drain valve is located underneath the entry doorsteps.
2. Next, open the hot and cold water drain valves located underneath the seating area by the Alde® System – open one at a time to create a pressure system.
3. Then lift the Alde® Relief Valve (yellow valve connected to blue pipe) and allow the Alde® hot Water Tank to drain.
4. Once the unit is completely drained, switch all the valves from camping season mode to winterization mode (see picture).

U - Q - L and S floor plan T@BS

Valves are in camping season mode



Valves are in winterizing mode after water was drained from the lines  
*(only needed if you're using RV antifreeze to winterize)*



5. Once you have all the valves in Winterization Mode/ Bypass Mode, add RV grade antifreeze – Do this by pouring 4-5 gallons of antifreeze into the freshwater tank. Turn on the water pump to cycle the antifreeze through the system or connect a line directly from the PEX side of the water pump and pump antifreeze directly into the lines. You do not have to dump antifreeze into the freshwater tank.
6. One by one, open every faucet, including the shower, until you have antifreeze coming out to ensure they are protected from freezing.
7. Pump the toilet to make sure the toilet is protected
8. **Important!** Pour antifreeze down all drains. The traps in the drain are very susceptible to freezing.



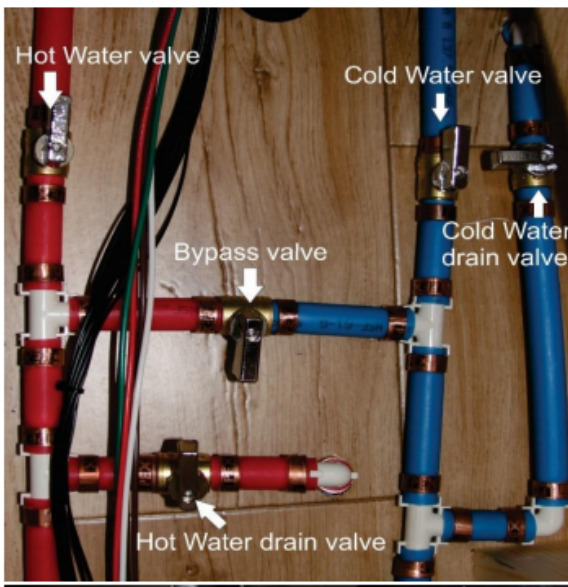
## Tab 320 S and U – Dewinterization

Dewinterization is the process of cleaning out the lines while keeping the unit in winterization mode. This allows the antifreeze to be pumped and cleared before you open the system back up to regular camping season mode, so the hot water tank does not get any antifreeze.

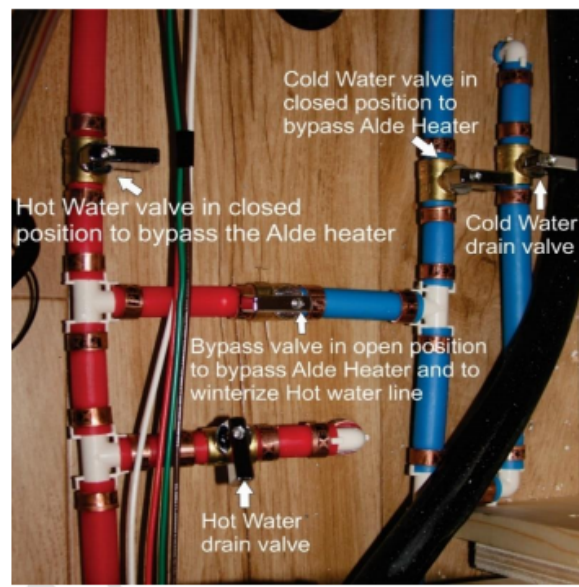
**Important!** Antifreeze and cleaner should not be allowed to enter into the Hot Water tank. It is important to clean and rinse the lines while the unit is still in winterization mode. While the unit is in winterization mode, nothing can get into the Hot Water tank.

U - Q - L and S floor plan T@BS

Valves are in camping season mode



Valves are in winterizing mode after water was drained from the lines  
*(only needed if you're using RV antifreeze to winterize)*



1. Drain the RV Antifreeze from your tanks and lines
2. Introduce a bleach/water mixture: (1 cup bleach per 2 gallons of water) and dump it into the freshwater fill. Run this bleach solution through all the water fixtures thoroughly.
3. Then run two full tanks of fresh, clean water through all the fixtures to rinse out the bleach solution and any remaining antifreeze.
4. Finally, turn the valves back to camping season mode by following the pictures.